

D. Moore & Sc





Design 18001- Carved Angel With Flowers

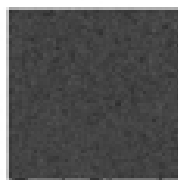
(Shown in Jet Black)

Die: 4-0 x 0-8 x 3-0

Bevel Front Base: 5-0 x 1-2 x 0-8



Jet Black



Dark Cloud Grey



Design 18007- Relief Carved

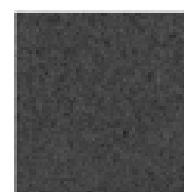
(Shown in Silver

Cloud) Die: 3-0 x 0-6 x 2-6

Base: 4-0 x 1-0 x 0-6



Jet Black

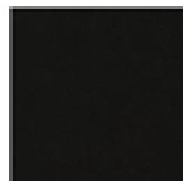


Dark Cloud Grey

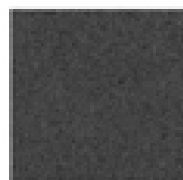
NEW



Silver Cloud



Jet Black



Dark Cloud Grey



Design 62009 - Carved Cross

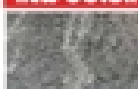
(Shown in Dark Cloud Grey)

Die: 4-0 x 0-6 x 2-4

Base: 5-0 x 1-0 x 0-6

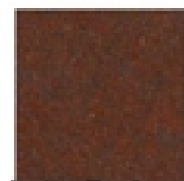
NEW COLOR

3 / 8

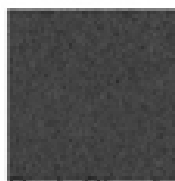


Design 18008- Carved Mary with Jesus

2019 SPECIALS



India Red

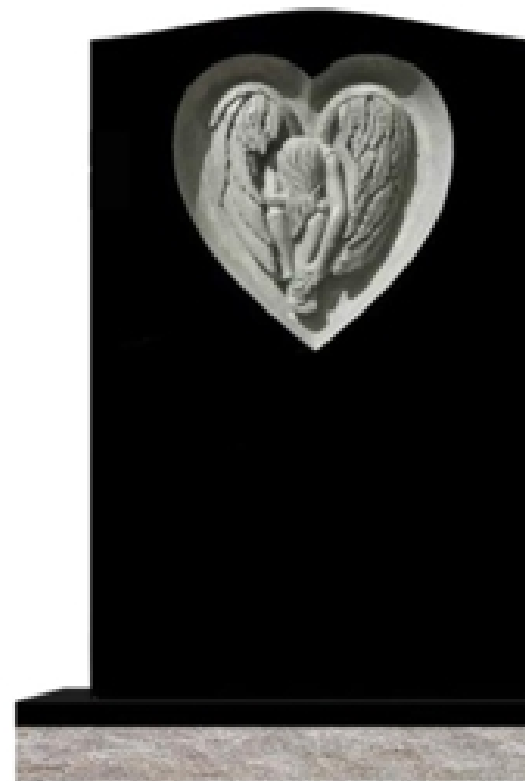


Dark Cloud Grey

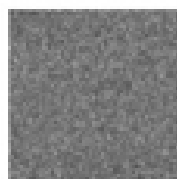


Jet Black

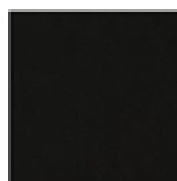
Pietà Cremation Pillar - Carved Pietà with Two Cremation Holes
(Shown in India Red)
Cap: 1-2 x 1 x 2 x 1-8
Pedestal: 1-2 x 1-2 x 2-0



Design 19001 - Relief Carved Angel
(Shown in Jet Black)
Die: 2-6 x 0-8 x 4-0
Base: 3-0 x 1-2 x 0-8



China Grey



Jet Black

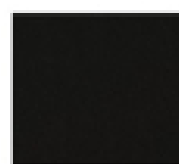
2 Niche Columbarium 19002
With Carved Birds



Design 19004 - Carved Angel
(Shown in Aurora Red)



India Red



Jet Black

**Design 19005- Carved Angel
With Flowers & Heart
(Shown in Jet Black)**

Die: 2-6 x 0-8 x 3-0

Bevel Front Base: 3-0 x 1-2 x 0-8



**Design 18012- Stippled Waves
with Carved Antique Rose
(Shown in Bahama Blue)**

Die: 2-6 x 0-6 x 3-6

Base: 3-0 x 1-0 x 0-6



**Design 18015 - With Waved Starburst
(Shown in Tan Brown)**

Die: 5-0 x 0-8 x 2-4

Base: 6-0 x 1-2 x 0-8



**Tear Drop With Carved Flower
(Shown in Bahama Blue)**

Die: 2-6 x 0-6 x 3-0

